



MJE 250



MULTITEL
SINCE 1911

MULTITEL

MULTITEL Vertrieb Deutschland

Arbeitsbühnen Becker

Johannes Becker

Fischteich 4

D - 35043 Marburg-Gisselberg

Telefon: +49 (0) 6421 - 16 64 364

Telefax: +49 (0) 6421 - 16 64 369

info@arbeitsbuehnen-becker.de

www.arbeitsbuehnen-becker.de

MJE 250

Product Overview



MJE 250

Performance and **S**tyle



MJE 250

Versatility in Working Condition



MJE 250



Optimized **L**ayout to reduce **O**verall **S**ize

MJE 250



- WORKING HEIGHT:

24,7 m



- LIFTING HEIGHT:

22,7 m



- WORK BASKET SIZE:

1,40 x 0,70 x 1,10 m



- LOAD CAPACITY:

250 kg



- BASKET ROTATION:

90° + 90°



- TURRET ROTATION:

450°

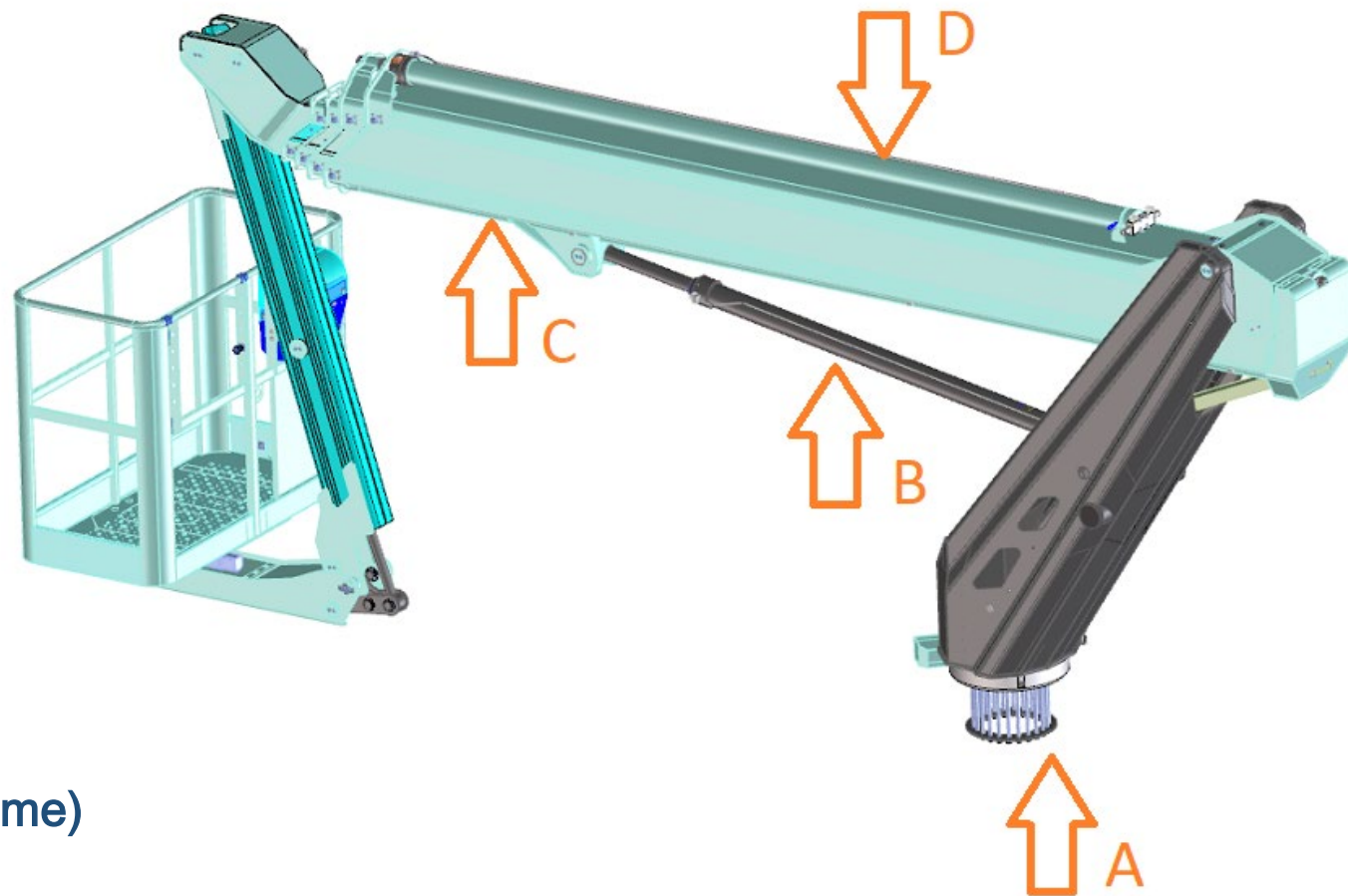


- MAX WORKING OUTREACH

17,2 m (80 Kg)

Testet Technology on MTE Range

MJE 250



A: turret and slew ring (the same)

B: lifting cylinder (the same)

C: boom components (pads, pins, ring, ecc)

D: boom extension cylinder (same Seal rings and components)

New Jib System

MJE 250

NEW JIB LIFTING
ARTICULATION

NEW
ALU CAGE

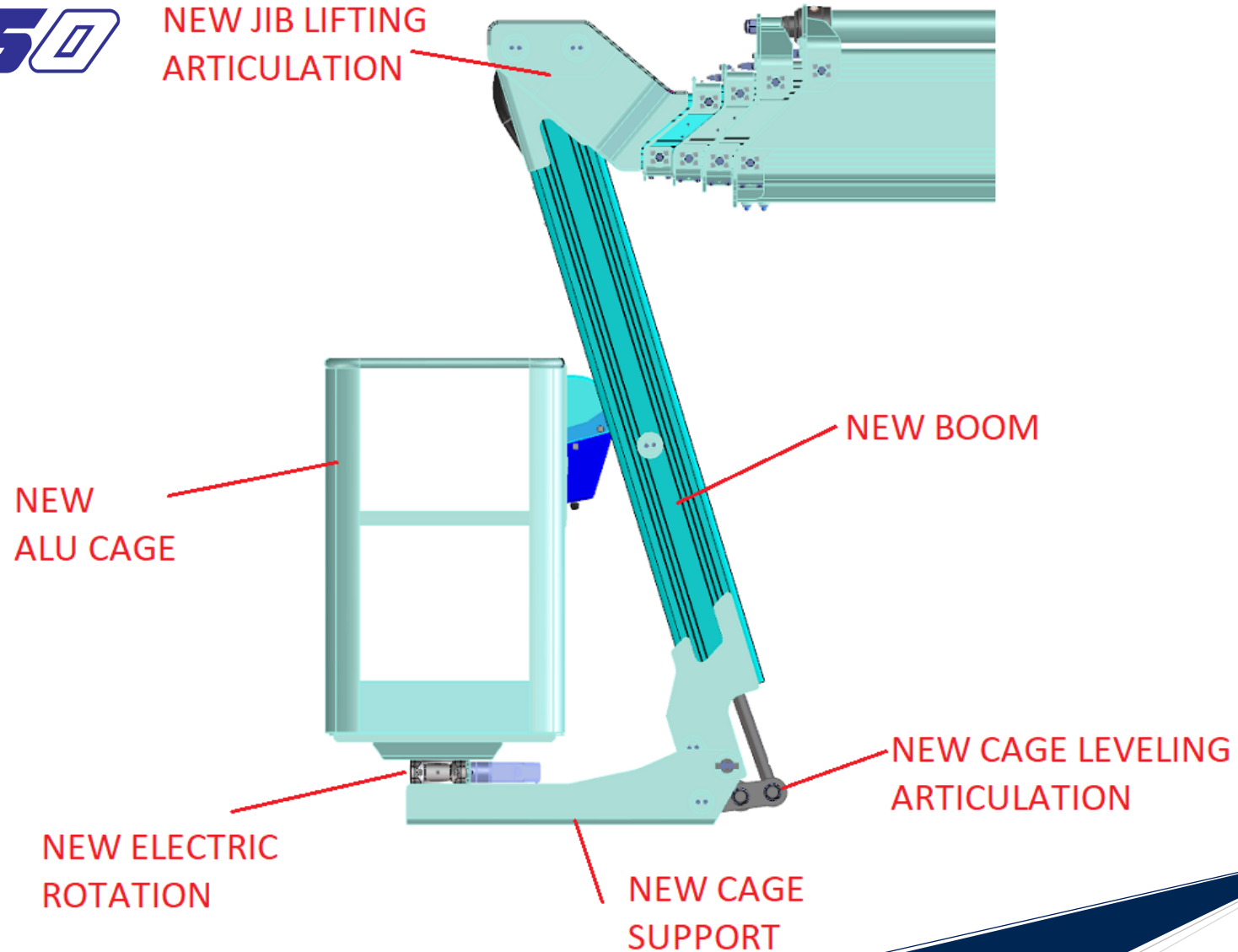
NEW ELECTRIC
ROTATION

NEW BOOM

NEW CAGE LEVELING
ARTICULATION

NEW CAGE
SUPPORT

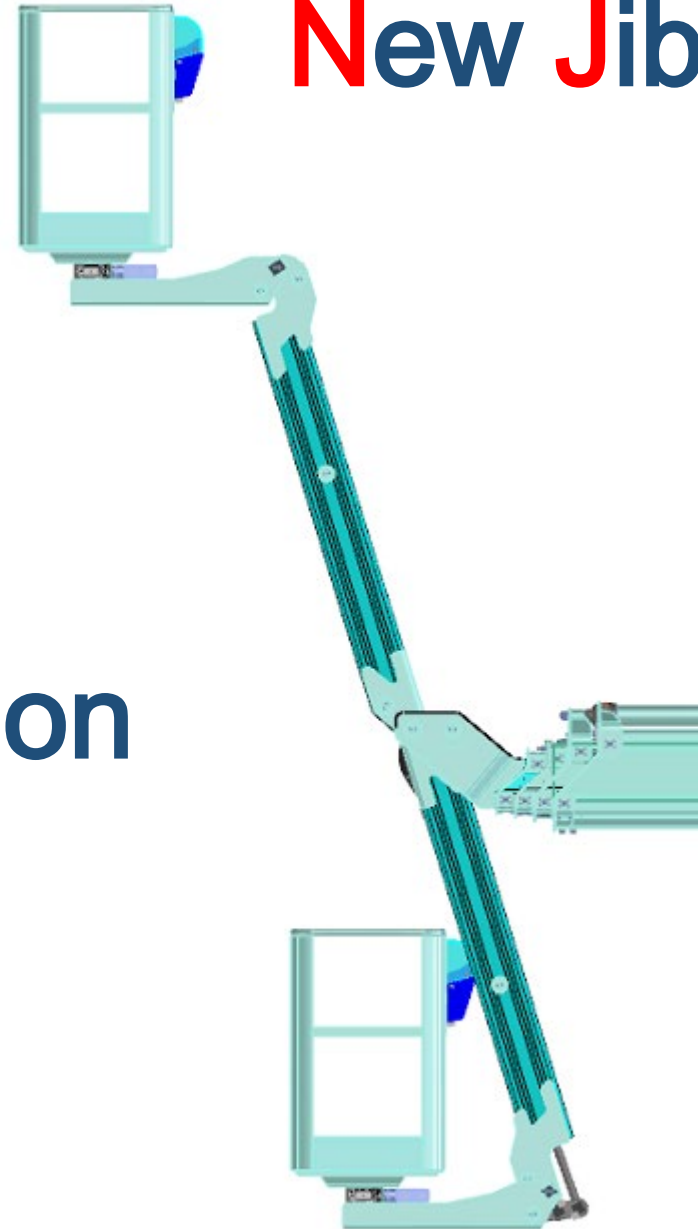
MULTITEL
SINCE 1911



MJE 250

New Jib System

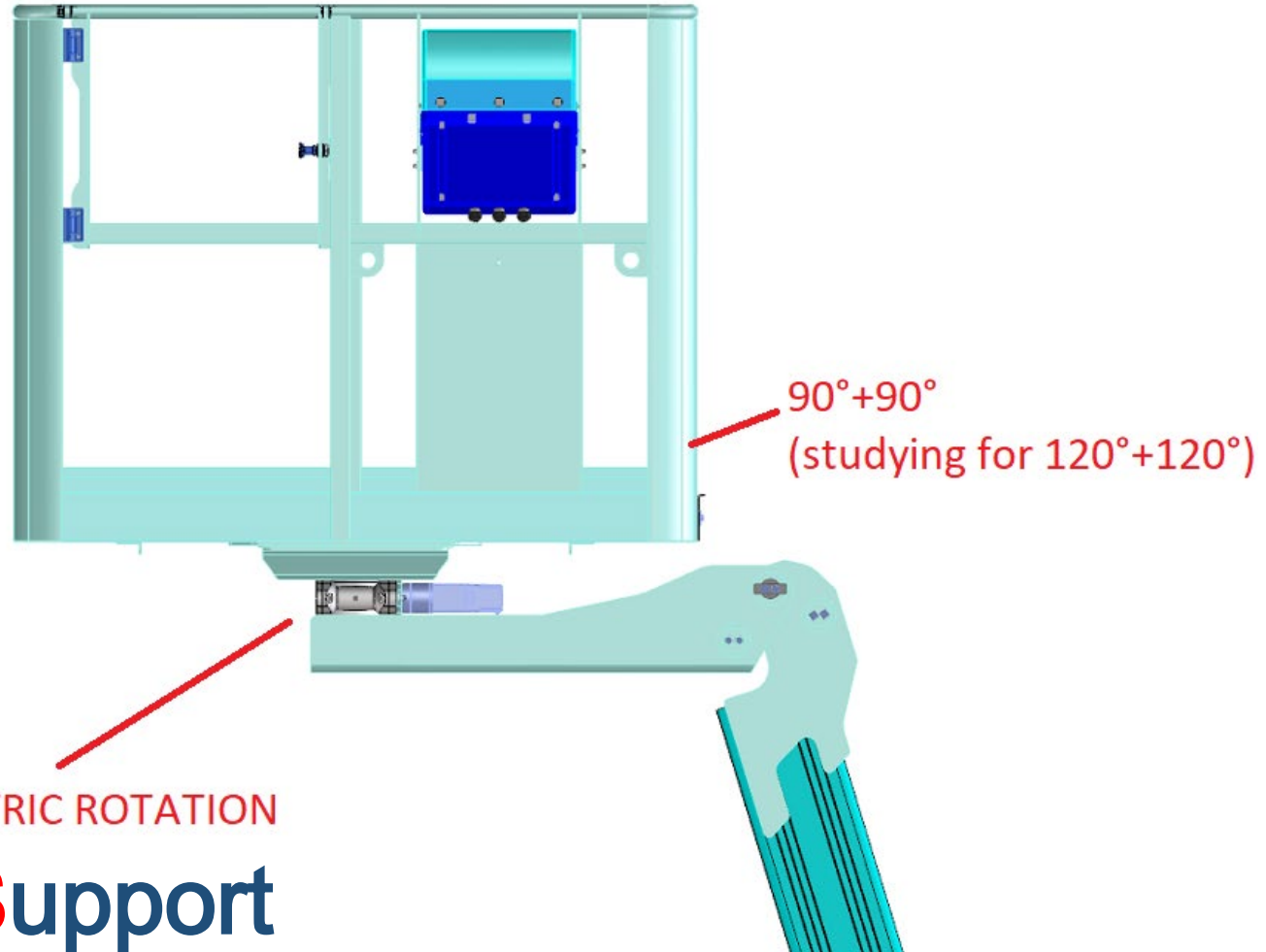
180 Degrees Articulation



MULTITEL
SINCE 1911

New Jib System

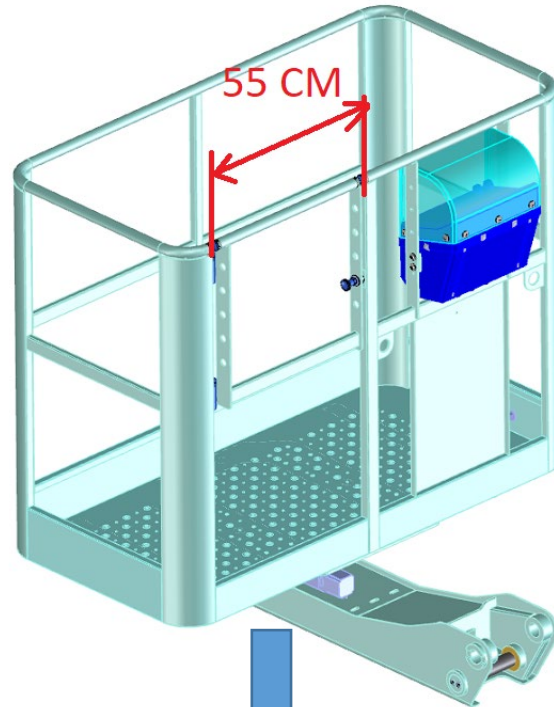
MJE 250



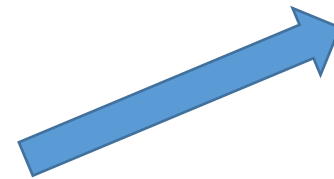
**New Cage Support
&
Simultaneous Mouvement**

MJE 250

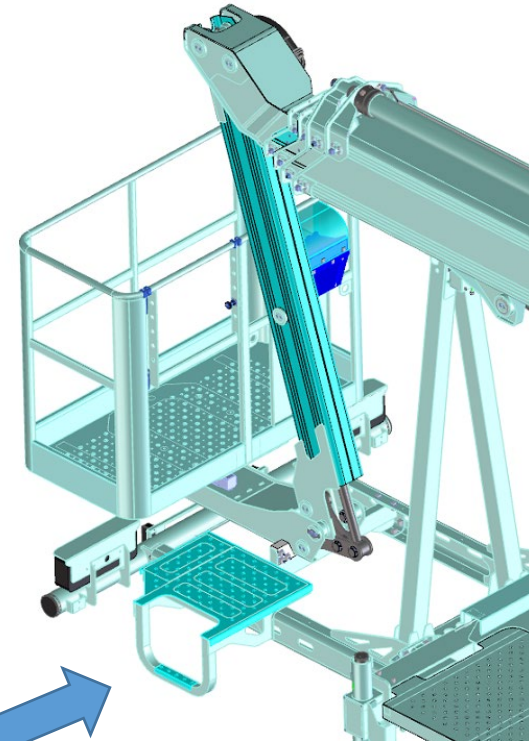
Square Tubes
for a better welding finishing



Frontal Cage Entry

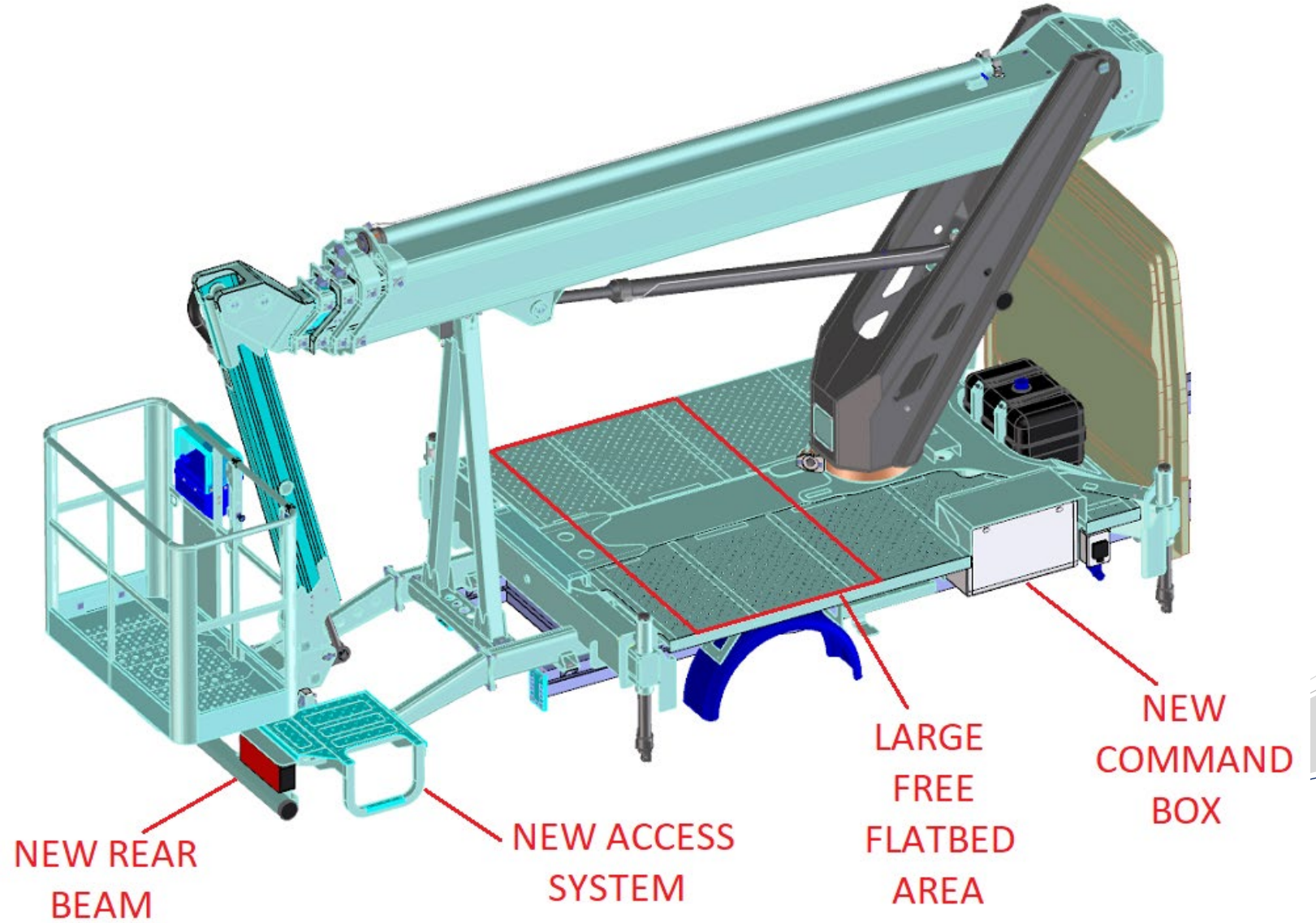


New Jib System



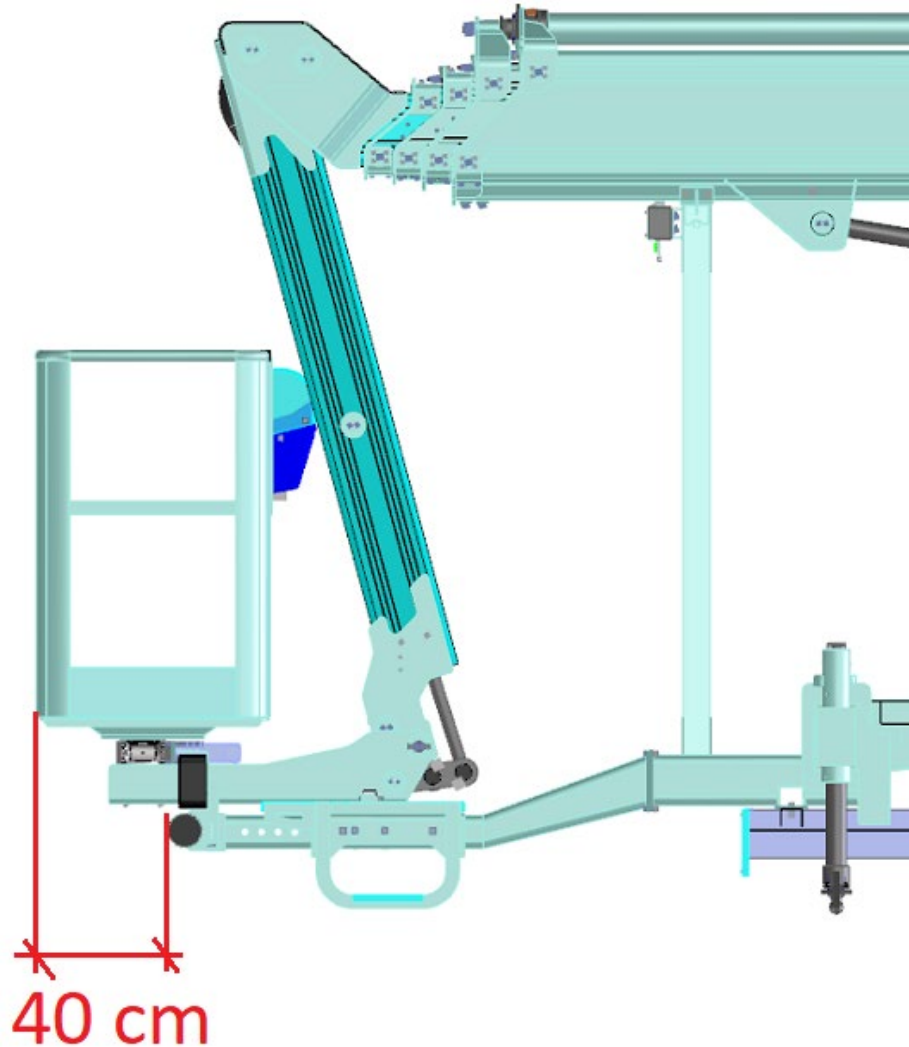
The Chassis

MJE 250



The Rear Bumper

MJE 250



- BUILT IN ALUMINIUM,
- POSITIONED 40 CM INSIDE
- AVAILABLE ON MERCEDES



MJE 250

Control Functions

- Telemetry system available - **remote diagnosis** : electronic control based on the new (SAET) electronic card
- New cage levelling system, based on proprietary SW with an accelerometric gyroscope Sensor, **boom angle correction** function, **active stop of the articulation** based on the angle of the cage.
- New speed control system, keeps the **speed of the cage** by regulating the **speed of the boom and the Jib.**
- New limiting outreach function, **adaptive outreach** to obtain **unrestricted jib function.**
- MUSA X - New limiting outreach function, to **work with chassis inclination of 3°** and outreach reduction (under development) – Improved performance compared with competitors, fine control



MJE 250

Musa X

MUSA X combines the flexibility of the classic MUSA where the outreach is calculated on the base of outrigger extension, weight in the cage, geometric configuration of the boom (angle and length), with a new variable: the inclination of the chassis. This improvement, based on the proved MUSA system give the maximum possible performance to the basket in every position of the arm and accepting a maximum of 3° residual chassis inclination.

The actual measured inclination of the chassis (measured on 360° of the arm) is used to adjust in real time the (pressure based) outreach limiter.

AVAILABLE VEHICLES

MJE 250

IVECO



Mercedes-Benz





MJE 250



AVAILABLE VEHICLES

IVECO



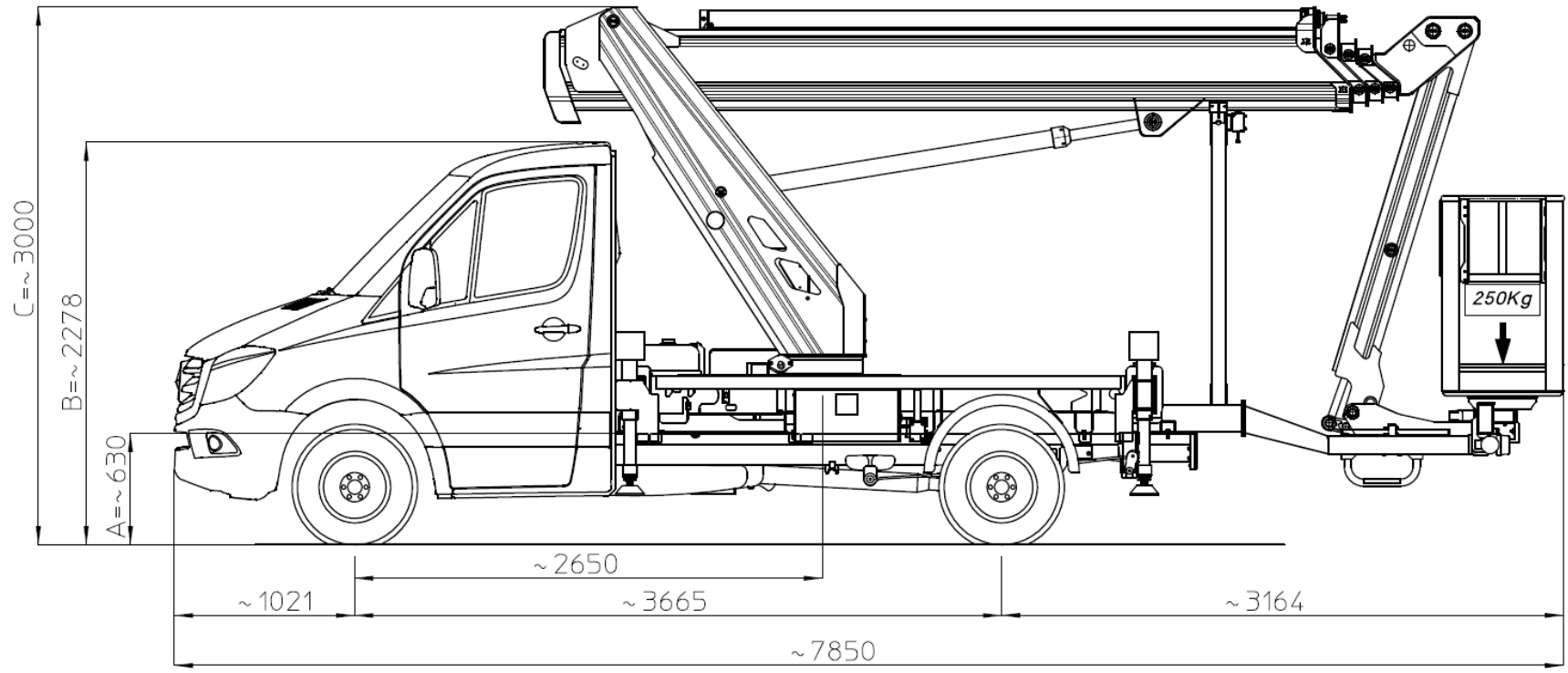
Mercedes-Benz

MJE 250

- Wheelbase 3665 mm;
- Total length 7850 mm;
- Total height 3000 mm;
- Rear Overhang 3164 mm (86% wheelbase);



Mercedes-Benz
Sprinter

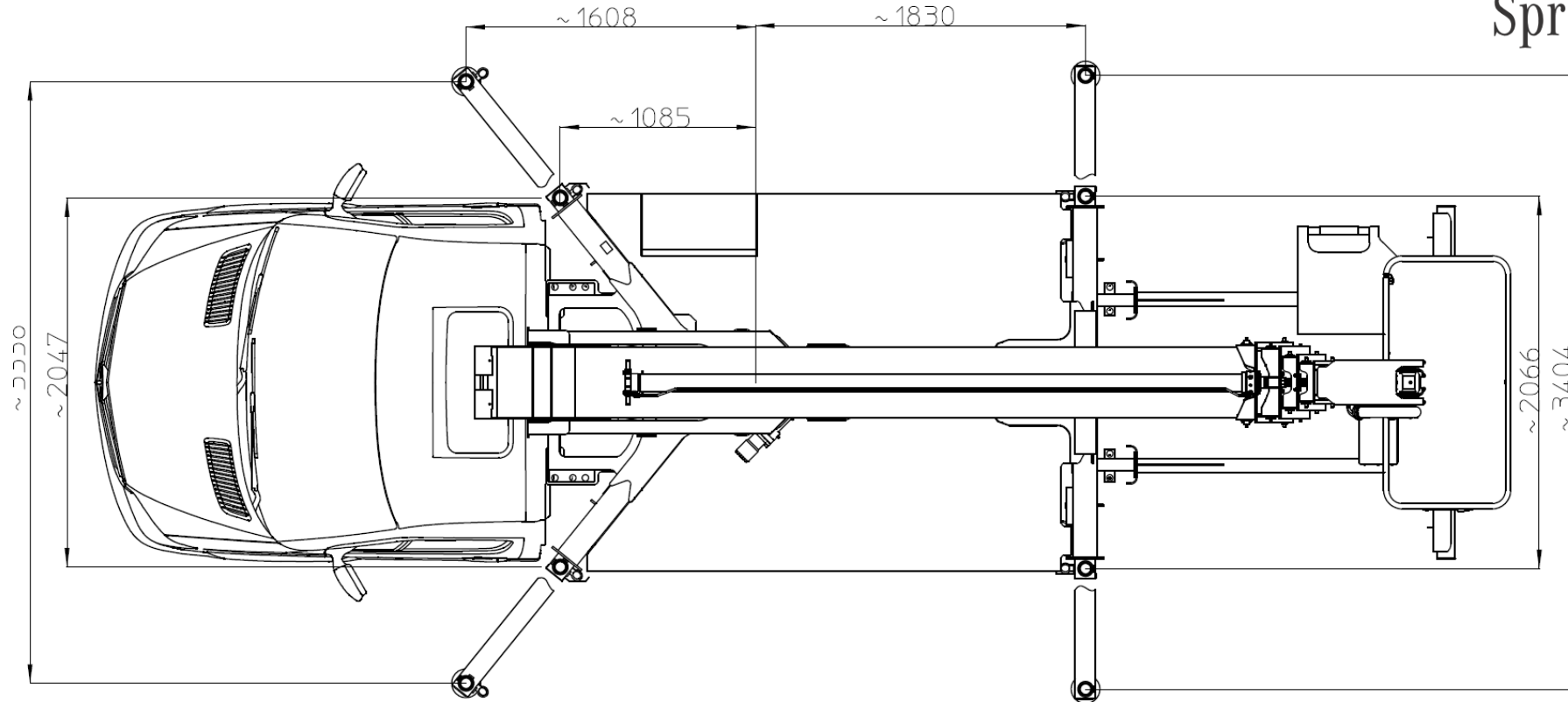


3,5 t

MJE 250

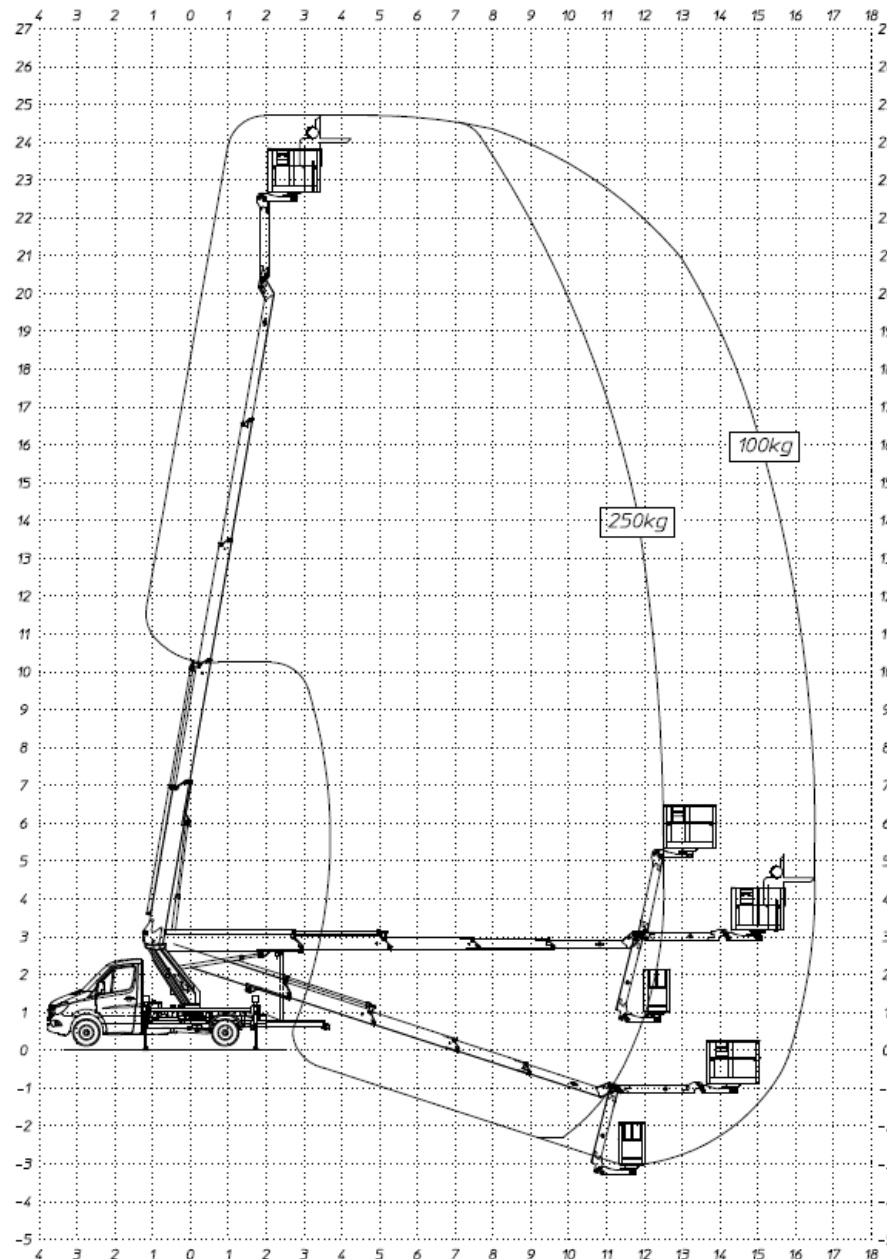


Mercedes-Benz
Sprinter



MULTITEL
SINCE 1911

MJE 250



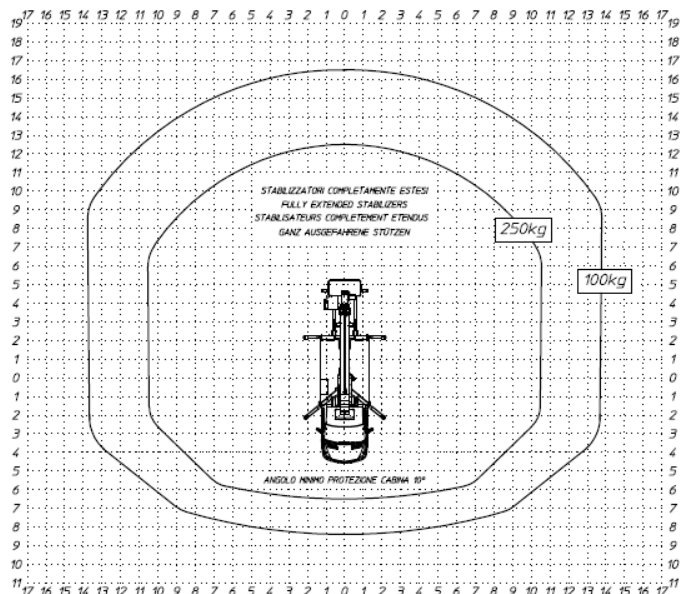
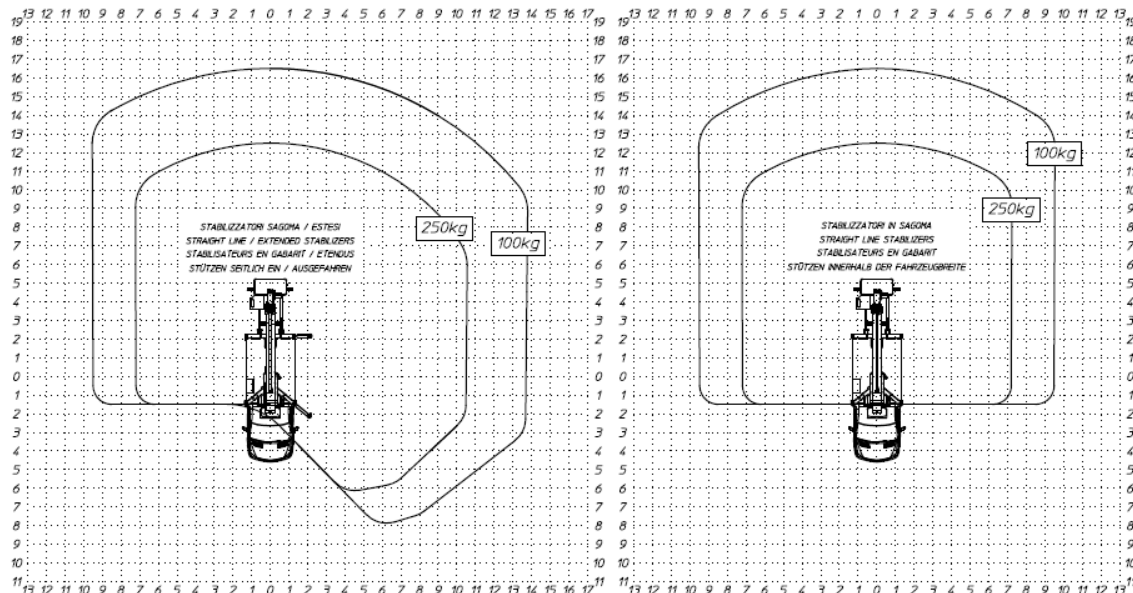
Mercedes-Benz
Sprinter

REAR WORK AREA

MAXIMUM WORKING OUTREACH:

250 Kg	12,5 m
80 Kg	17,2 m

MJE 250



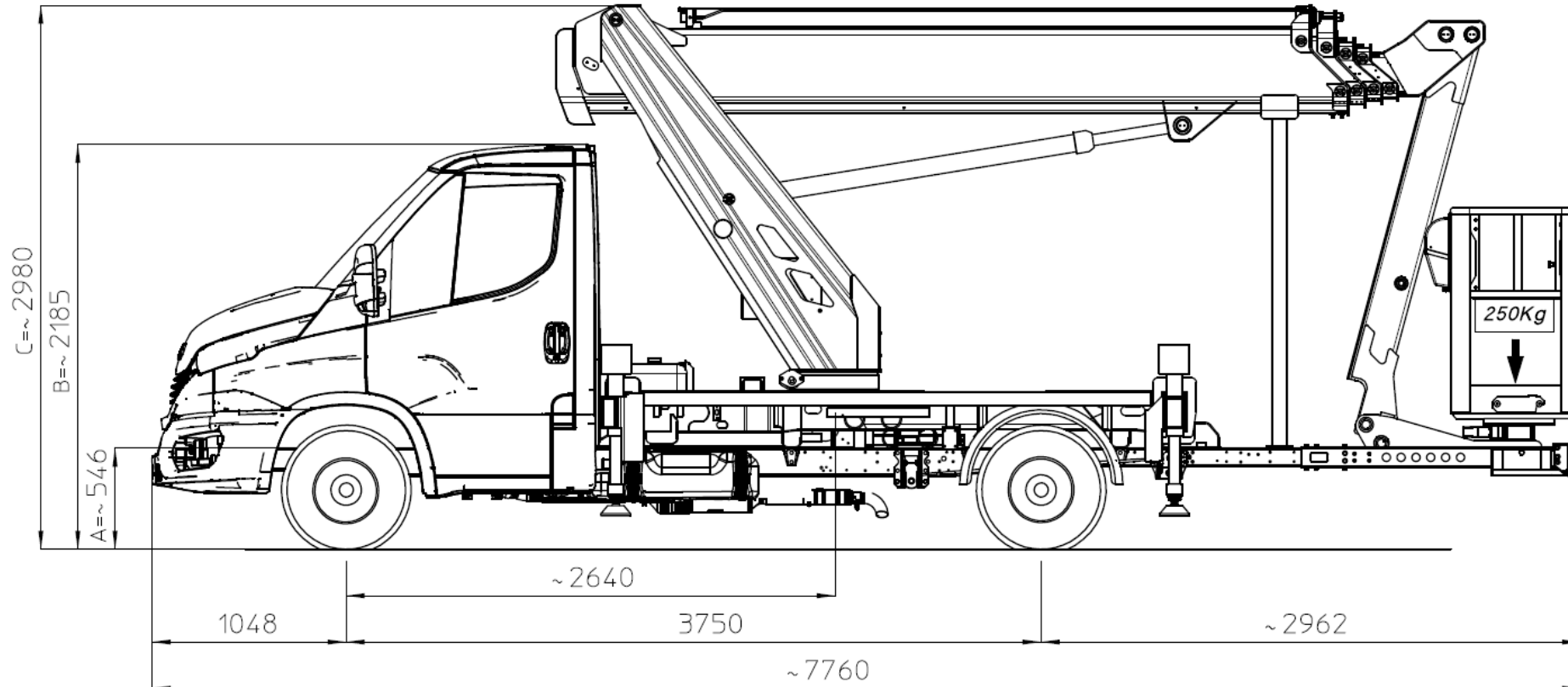
Mercedes-Benz
Sprinter

MJE 250

- Wheelbase 3750 mm;
- Total length 7760 mm;
- Total height 2950 mm;
- Rear Overhang 2962 mm (70% wheelbase).

IVECO

DAILY

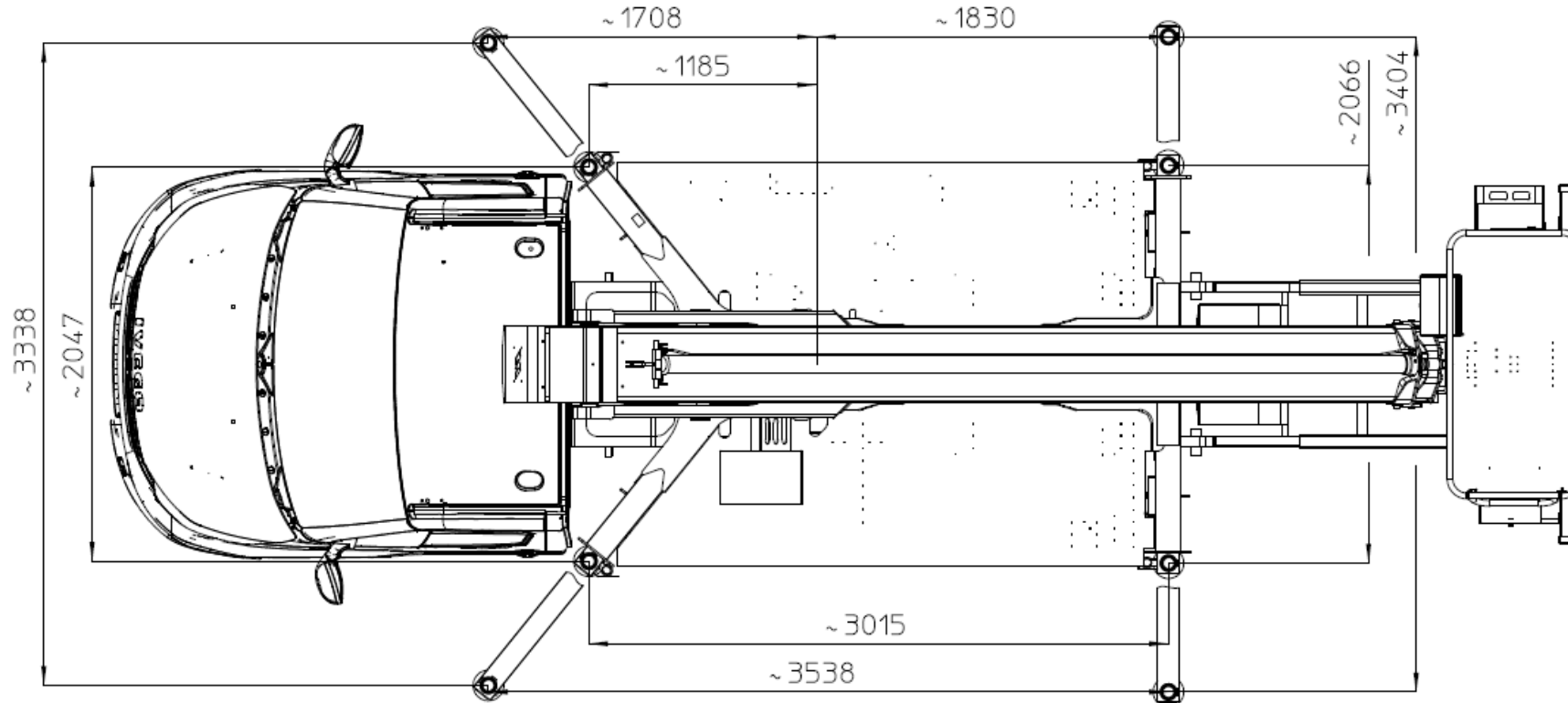


3,5 t

MJE 250

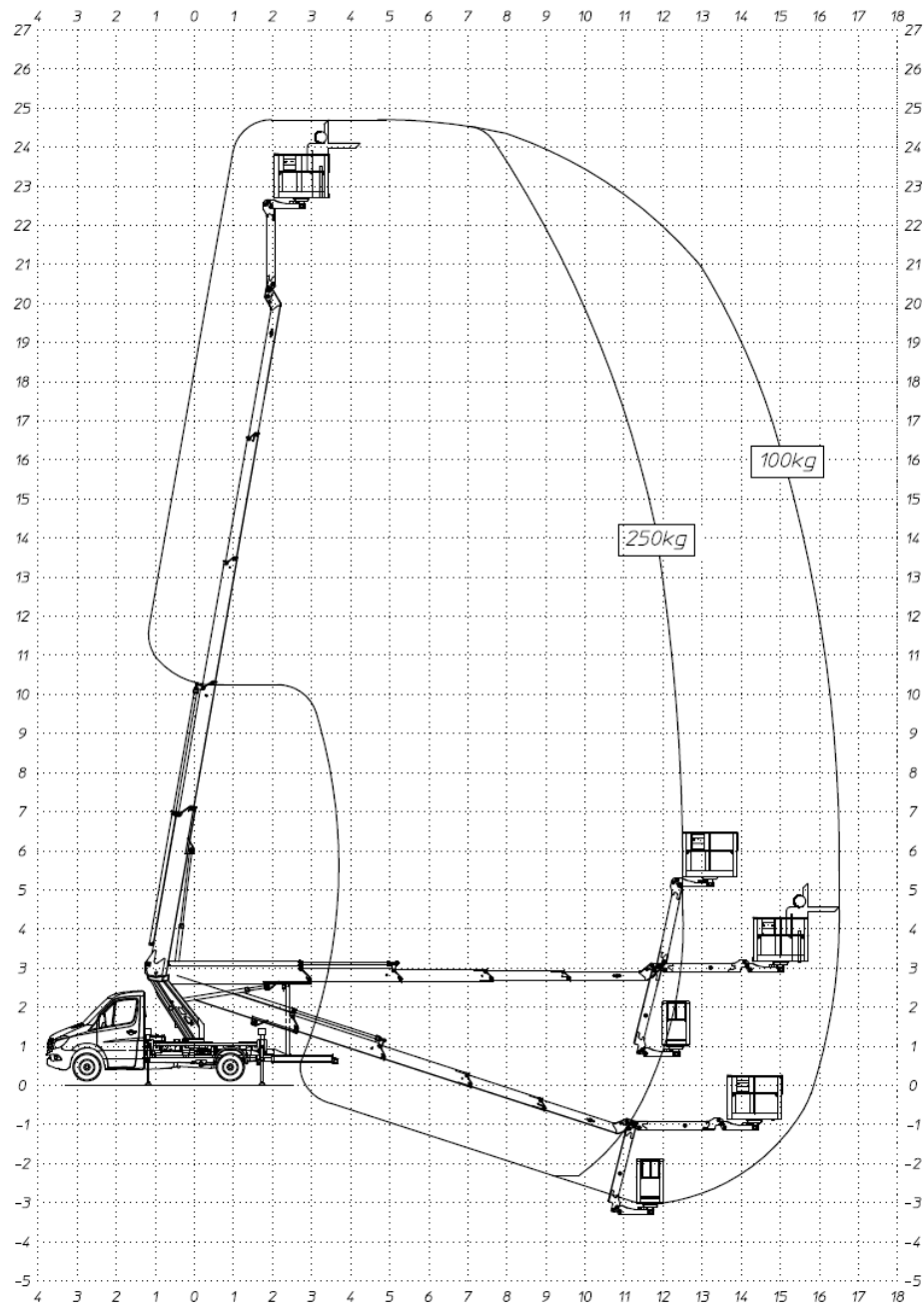
IVECO

NYL



MULTITEL
SINCE 1911

MJE 250

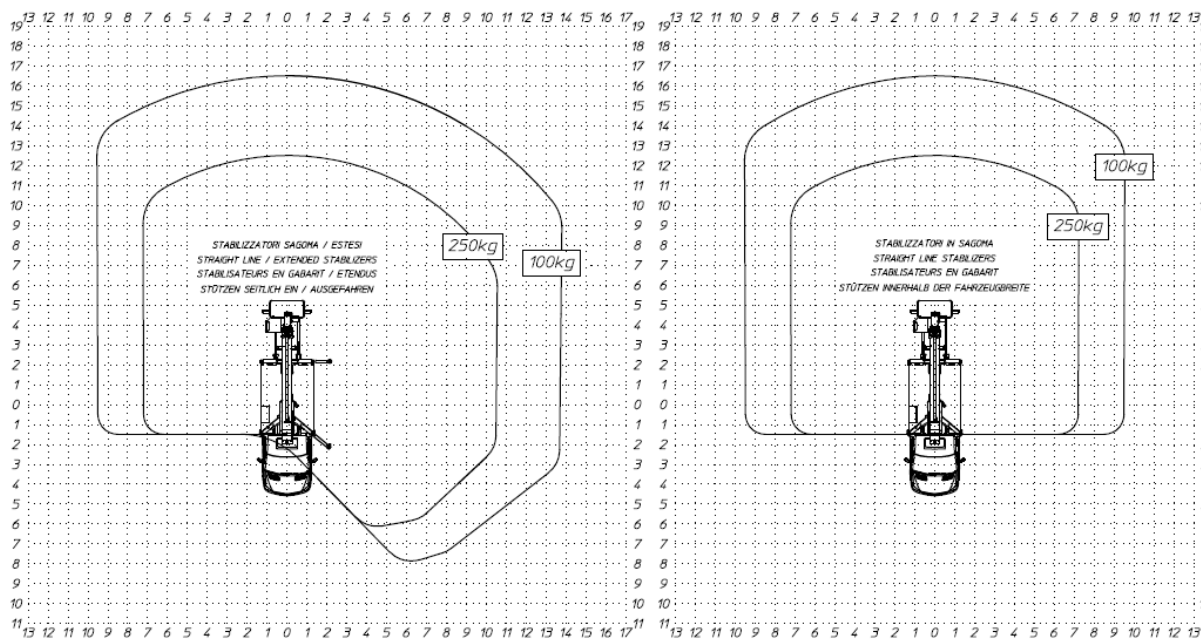


IVECO

DAILY

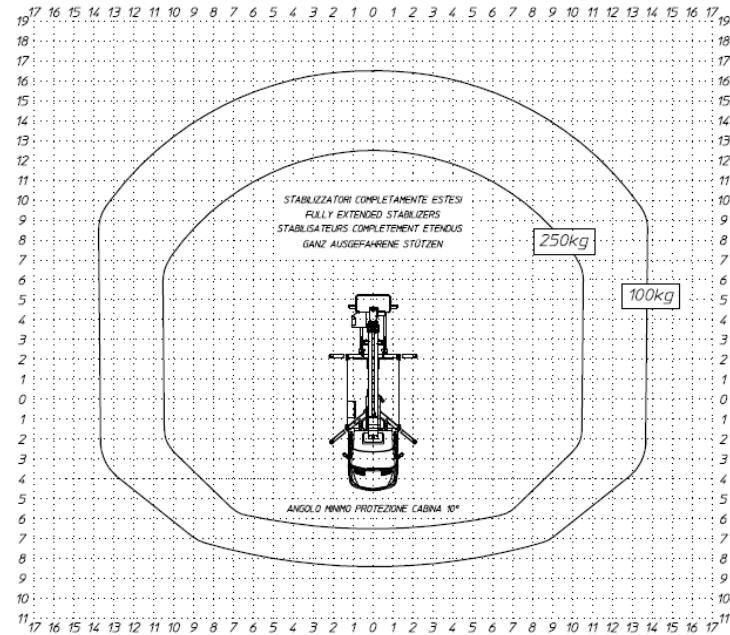
MULTITEL
SINCE 1911

MJE 250



IVECO

DAILY



MULTITEL
 SINCE 1911